



HIGH PERFORMANCE 1:10 ELECTRIC TOURING CAR

SETUP SHEET

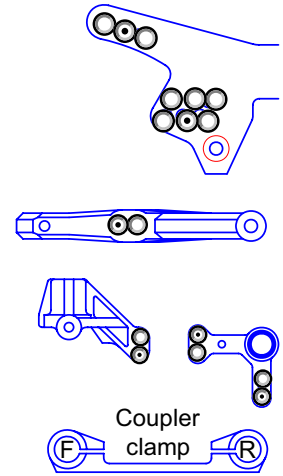
Driver: DJ

Track / City: Langenthal

Event: SM Date: 17.8.2008

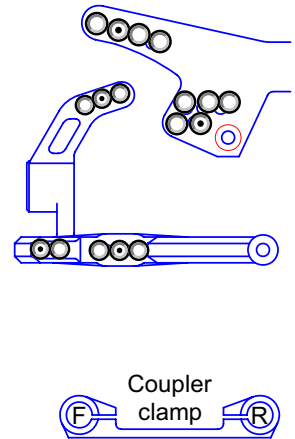
Front

Caster 3° Downstops 7.5 mm Oil 40 WT
 Toe-out 0.5° Anti-roll bar - Piston Tamiya 3 L.
 Camber 0.5° Front width 187 mm Rebound 30%
 Ride Height 5.3mm Front drive spool Spring Tamiya blau lbs
 Wishbone 5 Front pulley std Shock tower std
 Wheelbase 1mm Scheibe hinten Steering std Steering block schmal
 F Coupler std unten F coupler shims 1.5 Coupler clamp std
 R Coupler std unten R coupler shims 1.5 Clamp shims 0



Rear

Anti-squat 0 Downstops 9 mm Oil 30 WT
 Toe-in 2° Anti-roll bar - Piston Tamiya 3 L.
 Camber 1° Rear width 189 mm Rebound 30%
 Ride Height 5.5mm Center pulley std T Spring Tamiya blau lbs
 Wishbone 5 Rear pulley std T Shock tower std
 Wheelbase 1mm Scheibe vorne Upright 0 toe-in
 F Coupler std F coupler shims 1/1.5 Coupler clamp std
 R Coupler std R coupler shims 0 Clamp shims 0

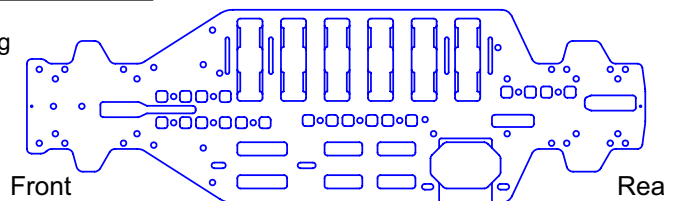


Others

Tires CS27 Hand-out Tire additive -
 Motor LRP X11 3.5T 12.5mm Motor setup Untersetzung 8.62 Spur / Pinion 112 T / 26 T
 Radio Futaba 3VCS Servo KO PDS2367-ICS ESC LRP TC Spec
 Body PF Mazda Speed 6 Wing std Weight balance
 Lead Weights 0 g

Track Conditions

Surface Asphalt
 Traction gut
 Temp. 30-45°C
 Notes Reifen VL 1-3 geheizt



Race Comments

Main A Finish 1 Qual. Pos. 2 Time 21R 5:04 Laps

Akku vorne, 2mm Chassis mit Strebe, v+h schmale Radmitnehmer; 1mm Scheibe bei Lenkhebel